

2020A

2020 9 10



( 2 )

2017A(

2 )

2020A

2020A

2020 9 10

2020 9 10

1  
1.1  
1.2  
1.3  
1.4  
1.5  
2  
3  
3.1  
3.2  
4  
4.1  
4.2  
5  
5.1  
5.2  
5.3  
5.4  
6  
6.1  
6.2  
6.3  
7  
7.1  
7.2  
7.3  
8  
8.1  
8.2  
8.3  
8.4  
9  
9.1  
9.2  
9.3  
9.4  
9.5  
10  
10.1  
10.2  
10.3  
10.4  
10.5  
10.6  
10.7  
10.8

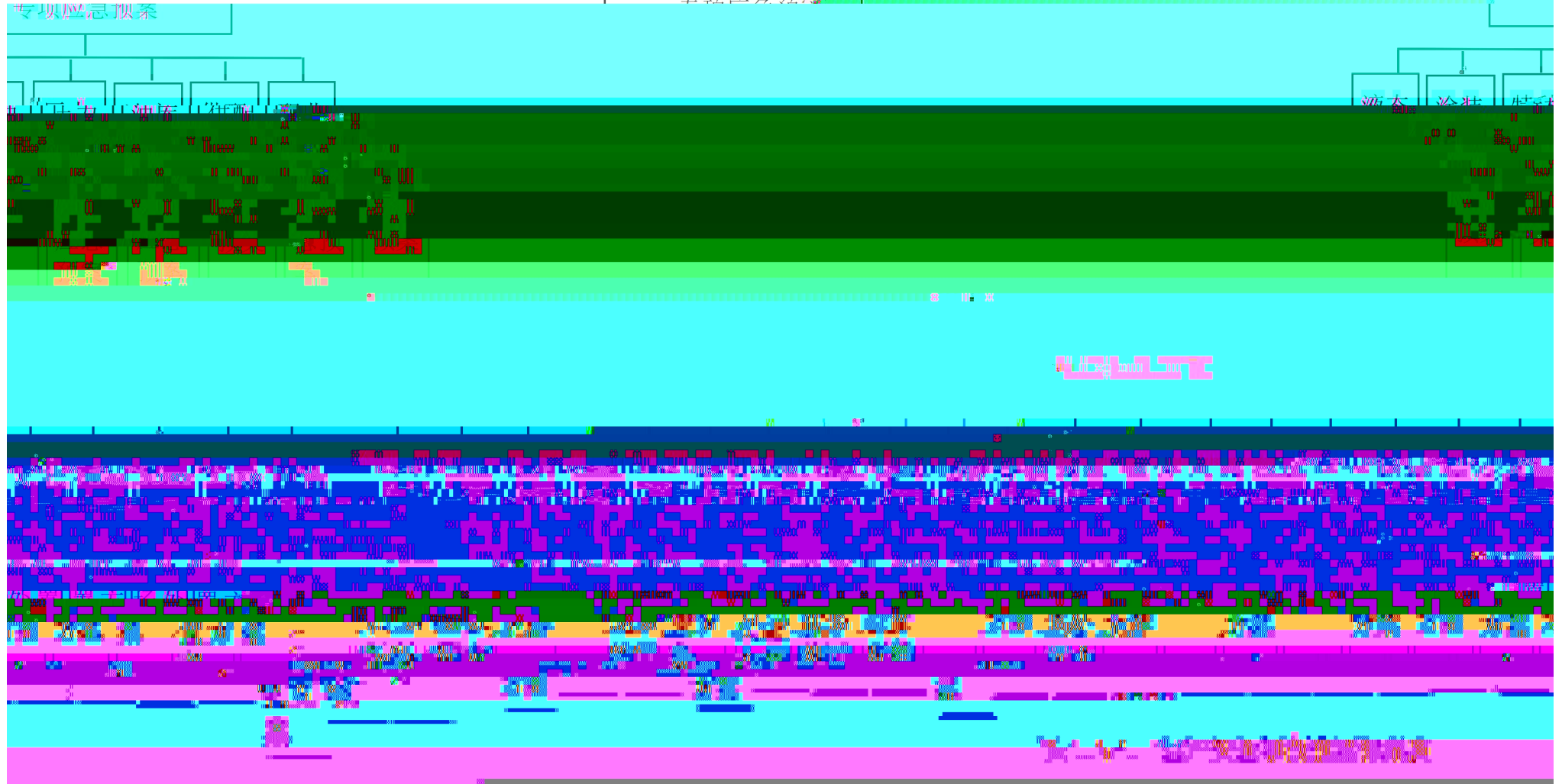
1  
1  
1  
1  
3  
3  
4  
4  
4  
8  
8  
9  
10  
10  
11  
12  
13  
14  
14  
14  
14  
14  
15  
15  
15  
15  
16  
16  
16  
16  
17  
17  
18  
18  
18  
19  
20  
20  
21  
21  
23  
24  
29  
30  
32  
33  
40

1

1.1

# 生产安全事故综合应急预案

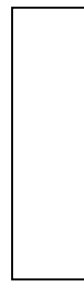
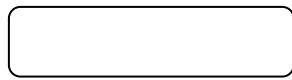
专项应急预案



2

2 1-1

1					
2					
3					
4					
5					
6					
7					
8					
9					
10					
11					
12					
13					
14					
15					



3.2.2

3.2.3

2

3

4

5)

4

1

2

3

1

2

3

5

5.1-1




5.3.1

5.3.2

5.3.3

1

2

3

5.3.4

1

2

5.3.5

1

2

### 5.3.6

1

2

3

4

### 5.3.7

### 5.3.8

1

2

3

1

2

3

**6**

1

2

3

1

2

3

7

1

2

3

8

24

0551 - 63689592

0551 - 63689596

0551 - 63689408

24

1

2

3

4



9

9.1.1

1

2

9.1.2

1

2

3

4

5

6

7

8

9

9.1.3

9.1.4

1

2

3

1

2

3

4

5

1

2

3

9.4

9.5

10

10.1

10. 8. 1

10. 8. 2

### 10. 1-1

		668
		230601
		1993 9
		63689835 13905692671
		63689085
		2791
		61, 681. 7335
		20
		702

### 10. 1-2

		m <sup>2</sup>	m <sup>2</sup>	
1		30500	30320	1
2		13622	14791	1
3		8436	7926	1
4		15095	13867	1
5		19825	19735	1
6		23106	22052	1
7		25704	25408	1
8		10030	10030	1
9		190	190	1
10	35KV	365	630	2
11		7510	25900	6
12				

10

360m<sup>2</sup>

10

324m<sup>2</sup>

21m<sup>2</sup>

15m<sup>2</sup>

14m<sup>2</sup>

## 10.2

### 10.2-1

1		2014 13
2		2007 69
3	2019	2019 29
4		2013 4
5		708
6		2007 493
7	2013	645
8		2
9		2009 21
10		2009 141
11		2018 3 21
12		2018 3 21
13		2018 24
14		GB/T29639- 2013
15		GB6441- 1986

16		AQ/T9011-2019

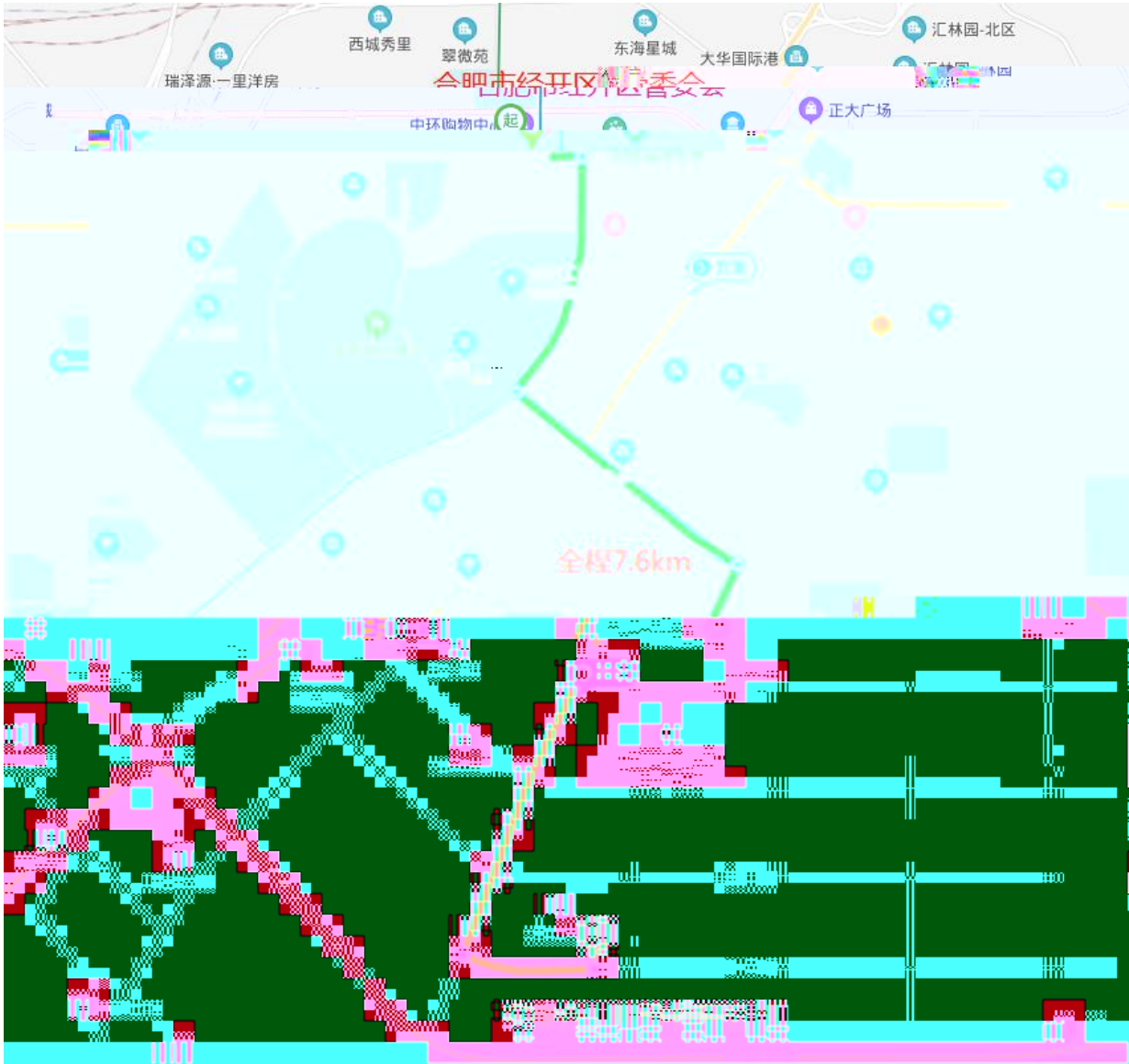
### 10.3.1

#### 10.3-1

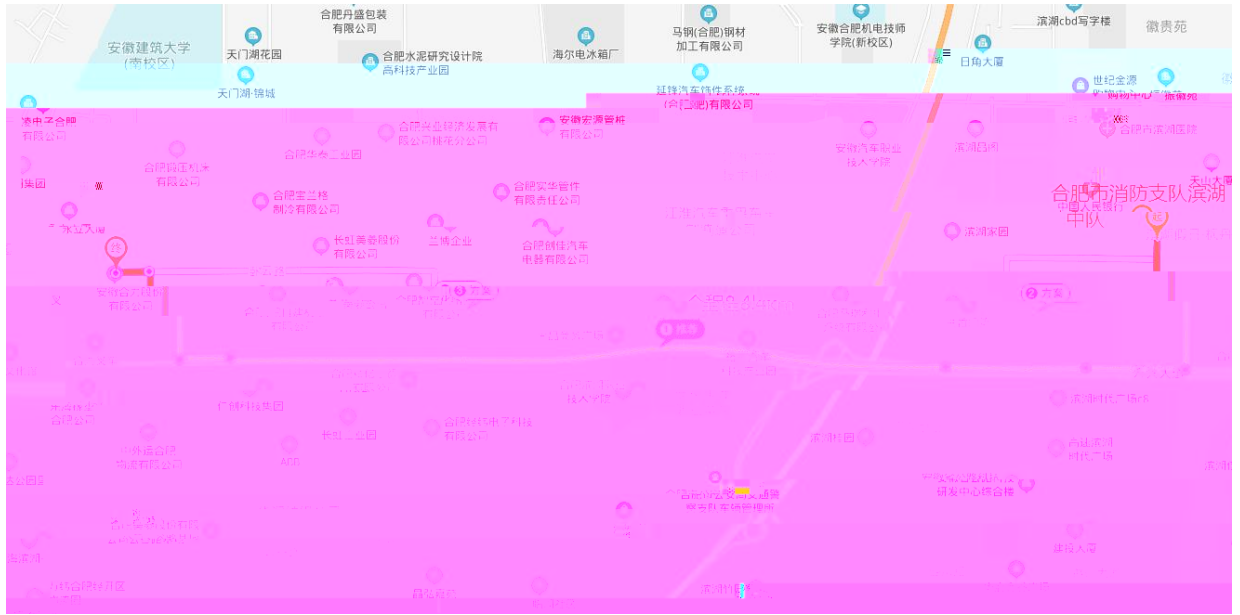
				0551-63689835	13905692671
				0551-63689612	13955192650
					13705692935
				0551-63689526	13866102135
					13856006977
				0551-63689511	13505510051
					13955177267
					13956080714
					13955159790
					13955146322
					13856070408
					13956043661
					13955150989
					13966741051
					15256985859
					13739258453
					13856907697
					15804291512
					13955150989
					13956930396
					13956043661
					13855138318
					13515643075
					18788899500
					15856995525
					13955164509
					13966768851
					13955142062
					15956970511
					18134512393
					13955133909
					13866660964
					13721099848



10.3.2.1



### 10.3.2.2



10.3.2.3



10. 4-1

				/	
1					
2					10
					18
3				13	
4					897
					929
					229
			4KG	4KG	4193
			35KG	35KG	48
					33
					1
					8
					16
					42
					4
5					2
					11
6				21	

"

"

### 10.5-1

1		1		
2		35		
3		24		
4		40		
5		24		
6		15		
7		25		
8		1		
9		1		
10		1		
11		3		
12		1		
13		2		
14		5		
15		500		
16		1000		
17		1000		

18

1000

19

500 /

800

800

10.6-1

---

---


1					
2					
3					
4					
5					
6					
7					
8					
9					
10					
			/	/	
1					13905692671
2				0551 - 63689612	13955192650
3					13705692935
4				0551 - 63689526	13866102135
5					13856006977
6				0551 - 63689511	13505510051
7					13955177267
8					13956080714
9					13955159790
10					13955146322
11					13856070408
12					13956043661
13					13955150989
14					13966741051
15					13956930396
16					13956043661
17					13855138318
18					13515643075
19					18788899500
20					13955164509
21					15956970511

1					
2					
3					
4					
5					
6					
			/	/	
1				13966741051	
2				15256985859	
3				13739258453	
4				13856907697	
5				15804291512	

1					
2					
3					
4					
5					
6					
1.					
			/	/	
1				0551 - 63689612	13955192650
2					13955164509
3					13705692935
4				0551 - 63689526	13866102135
5					13856006977
6				0551 - 63689511	13505510051
7					13955177267
8					13956080714
9					13955159790
10					13955146322
11					13856070408
12					13956043661
13					13955150989

1					
2					
3					
1.					
			/	/	
1				13955150989	
2				13956930396	
3				13956043661	
4				13855138318	
5				13515643075	

1					
2					
3					
4					
1.					
			/	/	
1					18788899500
2					15856995525

1					
2					
3					
4					
1.					
			/	/	
1				13955164509	
2				13966768851	
3				13955142062	



10.8.1

10.8.2

10.8.3

10.8.4

10.8.5

10.8.6